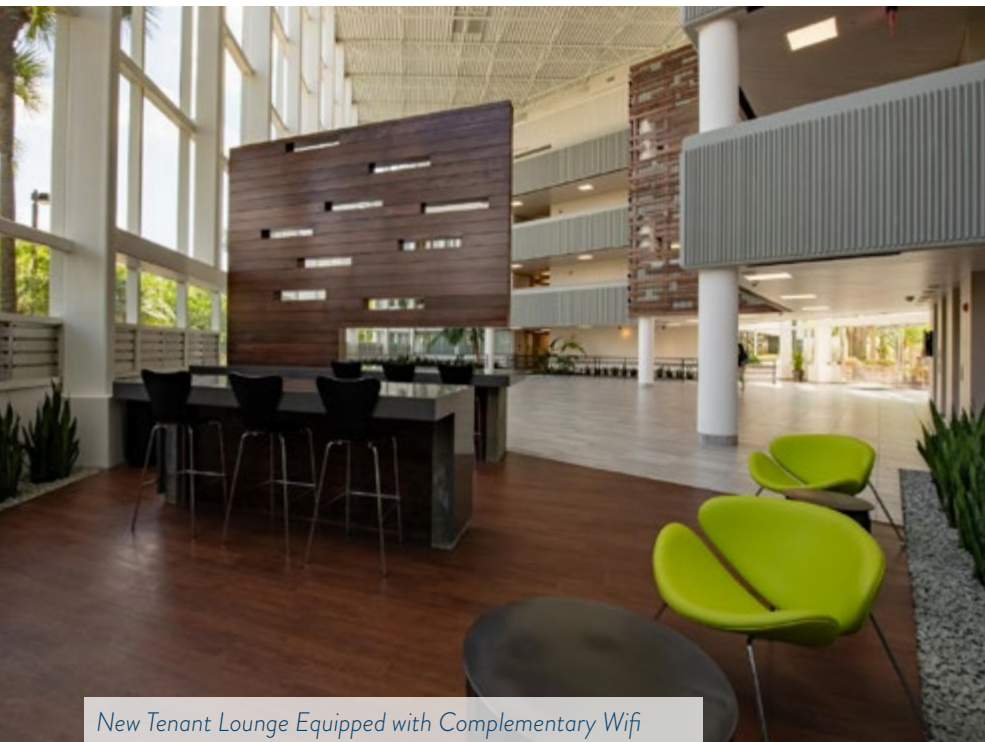


OFFICE FOR LEASE | 2,280 - 11,388 RSF AVAILABLE

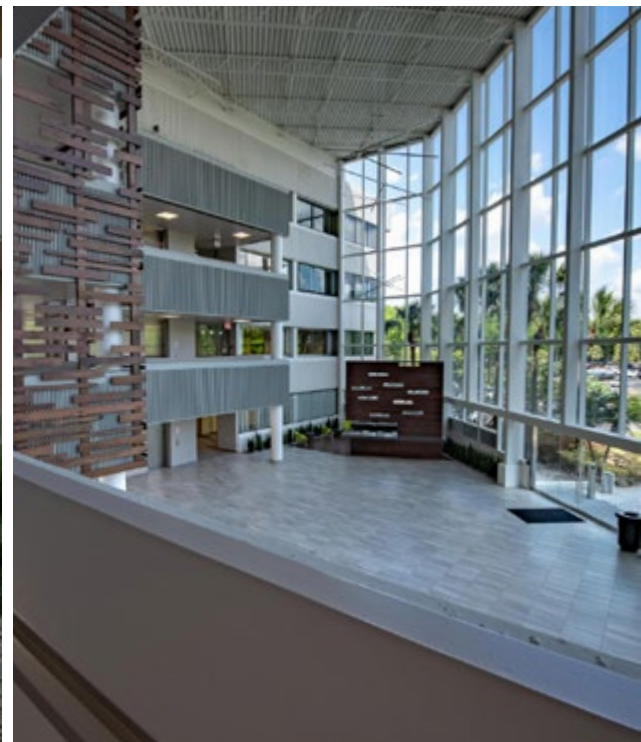
NEWLY RENOVATED LOBBY, RESTROOMS AND CORRIDORS



*Reappointed Lobby Entrance and Atrium*



*New Tenant Lounge Equipped with Complementary Wifi*



**For further information, contact:**

TIFFANY ZULLO  
tzullo@towerrealtypartners.com  
407.659.0120 ext. 114



OFFICE FOR LEASE | 2,280 - 11,388 RSF AVAILABLE



## AVAILABILITIES

Suite 125 2,280 RSF

Suite 420 11,388 RSF

## PROPERTY FEATURES

- Building signage and monument signage available
- Beautiful 4-story Atrium, water views
- 2019 ENERGY STAR CERTIFIED
- 4/1000 parking ratio
- 24-hour access
- Move-in ready suites
- Across street from RDV Sportsplex and Sam Sneads
- **NEWLY RENOVATED LOBBY, RESTROOMS AND CORRIDORS**

For further information, contact:

TIFFANY ZULLO  
tzullo@towerrealtypartners.com  
407.659.0120 ext. 114

OFFICE FOR LEASE | 2,280 - 11,388 RSF AVAILABLE



## BUILDING LOCATION

- Conveniently located less than a half mile from Interstate 4 with easy access to Downtown Orlando
- Located near the front entrance of Maitland Center, fronts Maitland Boulevard
- Close Proximity to business hotels, restaurants, retail shops, RDV Sportsplex, and upscale neighborhoods
- Lynx bus stop near property



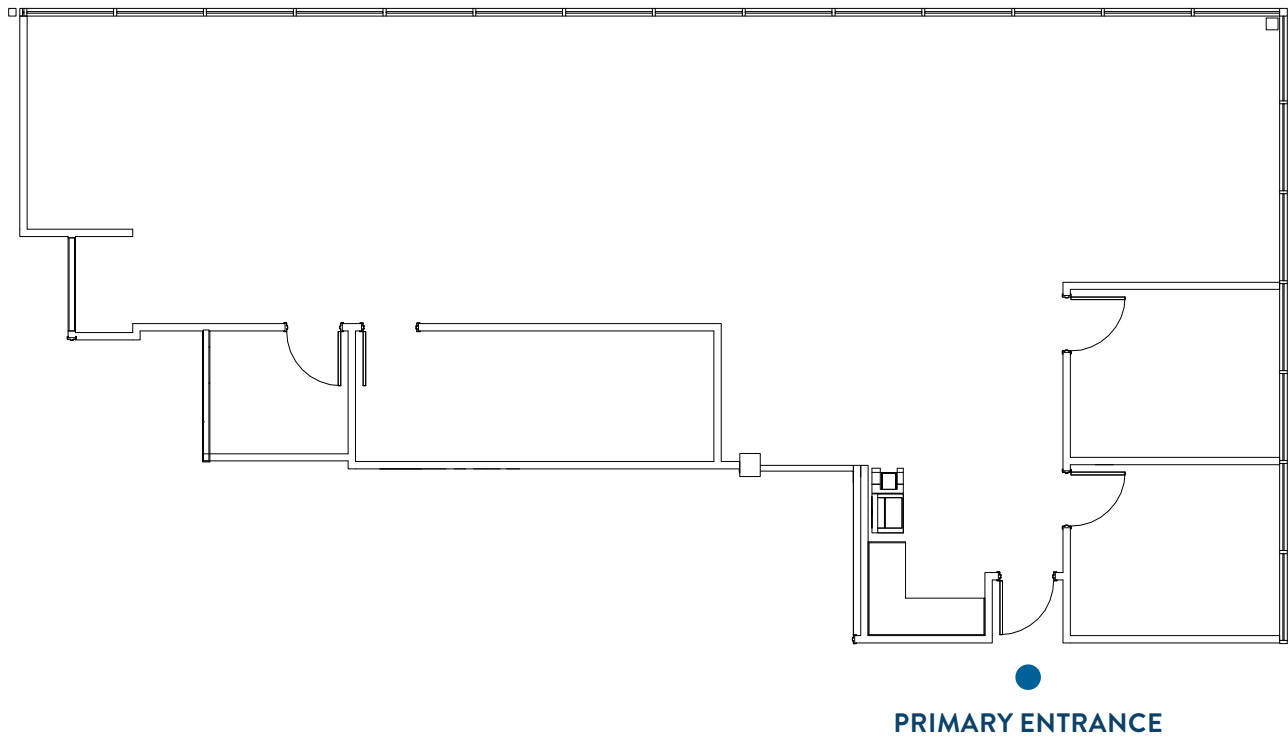
For further information, contact:

TIFFANY ZULLO  
tzullo@towerrealtypartners.com  
407.659.0120 ext. 114



OFFICE FOR LEASE | 2,280 - 11,388 RSF AVAILABLE

## SUITE 125 | 2,280 RSF



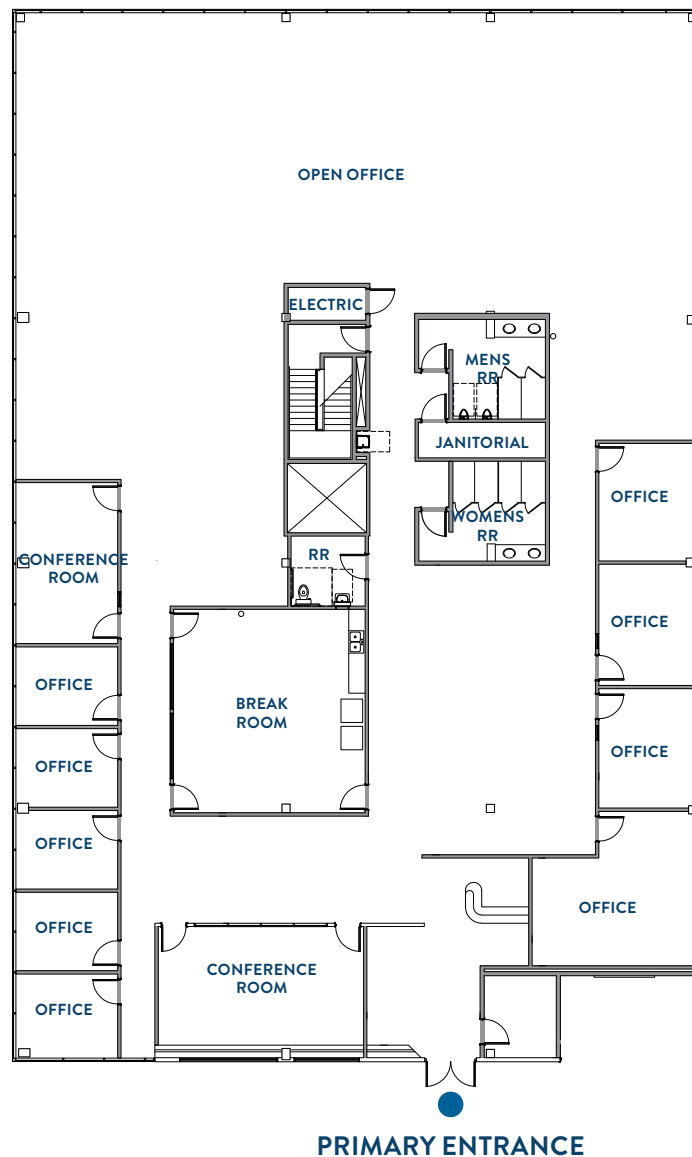
*Note: Drawing not to scale*

**For further information, contact:**

TIFFANY ZULLO  
tzullo@towerrealtypartners.com  
407.659.0120 ext. 114

OFFICE FOR LEASE | 2,280 - 11,388 RSF AVAILABLE

## SUITE 420 | 11,388 RSF



Note: Drawing not to scale

For further information, contact:

TIFFANY ZULLO  
tzullo@towerrealtypartners.com  
407.659.0120 ext. 114